

**Application for  
Community Watershed Stewardship Grant  
2006-2007**

**Bridlemile Community Watershed Education  
Albert Kelly & Hamilton Parks Maintenance**

**Submitted by  
Bridlemile Creek Stewards  
April 21, 2006**

**Authors:**

**Steve Mullinax ([steve.mullinax@alum.mit.edu](mailto:steve.mullinax@alum.mit.edu), 503.768.9065)**

**Greg Schifsky ([gregsch@hevanet.com](mailto:gregsch@hevanet.com), 503.246.2714)**

# Application

Community Watershed Stewardship Grant Program, 2006-7

## Part A: General Information

Project Title: Bridlemile Community Watershed Education; Hamilton & Albert Kelly Parks Monitoring and Maintenance.

Project Coordinators: Greg Schifsky & Steve Mullinax

Organization/school name: Bridlemile Neighborhood Creek Stewards (also referred to in this grant application as Bridlemile Creek Stewards, or BCS.)

Mailing Address: 4131 S.W. Lee St.

City: Portland State: OR Zip: 97221-3667

Telephone (day/evening): 503.246.2714 (Greg), 503.768.9065 (Steve)

Email: [gregs@hevanet.com](mailto:gregs@hevanet.com), [steve.mullinax@alum.mit.com](mailto:steve.mullinax@alum.mit.com)

Fiscal Agent: Southwest Neighborhoods, Inc (SWNI) Tax ID number of fiscal agent: 93-0717013

Amount requested from CWSP Grant	\$1,750
Funding from other sources	\$15,070
Total project cost	\$16,820

## Part B: Project Location

Location of project site (closest street address): Albert Kelly Park, SW Portland see attached map Albert Kelly Park Location and Hamilton Park SW 45<sup>th</sup> and Hamilton St., see map "Hamilton Park Location"

Name of immediately impacted water body: Unnamed Fanno Creek Tributary

Check Watershed:	Balch Creek	<input checked="" type="checkbox"/> Fanno Creek	Tryon Creek
	Columbia Slough	Johnson Creek	Willamette River

**Site photos:** Location of the Albert Kelly site in attached map, titled "Albert Kelly Park, Location". Overview of the Hamilton Park site in "Hamilton Park Location" map. Photos of both sites showing current condition of selected areas needing maintenance and infill planting are attached. See "Albert Kelly Park, April 2006" and "Hamilton Park, April 2006". Numerous additional site photos of the Albert Kelly site, along with documentation of work history on the site are available from the Albert Kelly Park Creek Restoration web page, <http://www.vonsalza.com/akcr/>, maintained by Victor von Salza.

## **Part C: Project Proposal**

### **Section I: Project Summary**

**Site Description:** The Albert Kelly and Hamilton Park sites are streamside buffers on unnamed tributaries of Fanno Cr. (See attached maps: Albert Kelly Park Restoration Site , Albert Kelly Park Neighborhood. , Hamilton Park Location )

The Albert Kelly site is part of a contiguous stream reach which includes the River Renaissance mitigation project in the St. Andrew s Presbyterian Church parking lot (see neighborhood map). This grant complements the church mitigation project site, as well as the recent BES revegetation downstream on Fanno Creek.

**Project Description:** This project focuses on (1) maintenance following restoration projects (2001-2006) in Albert Kelly Park and Hamilton Park, SW Portland, and (2) watershed education in the Bridlemile Neighborhood and surrounding SW Portland neighborhoods.

**Habitat and water quality benefits:** Extension of tree canopy and replacement of invasive groundcovers provides an emergent forest floor , adds structural and plant species diversity, providing improved cover, nesting and feeding. The current proposal protects and enhances the areas restored in previous projects. Combined with revegetation of soil exposed by demand trails, improves filtering of runoff, reducing particulates and dog feces. Moderates and buffers runoff volume. Spot removal of remaining patches and newly sprouting non-native plant ground cover ensures better medium for native plant seed. Provides a future seed bank of native plants and forest floor that will accommodate native forbs, grasses, trees and shrubs. Increased macro invertebrate populations have been noted in Hamilton Park stream area.

**Maintenance components:** The areas restored in the earlier projects need continued invasive removal touch-ups and infill planting of natives. Maintenance and monitoring in Albert Kelly and Hamilton Parks.

**Monitoring:** Ongoing twice-yearly macro-invertebrate study for population diversity under Master Watershed Stewardship long-term study, 2003-present.

**Educational components:** BCS engages neighbors, community groups and schools in Bridlemile and other Southwest neighborhoods, acting as a resource watershed information partner; Educational focus is on the importance of watershed and habitat health, and the associated benefits of restoration. We also instruct on how to do invasive removals and site conversions from non-native to native plant material projects.

Our web presence includes the Albert Kelly Park Creek Restoration page ([www.vonsalza.com/akcr/overview.html](http://www.vonsalza.com/akcr/overview.html)), the Bridlemile Creek Stewards page ([home.comcast.net/~steve.mullinax/bridlemile/BCS.htm](http://home.comcast.net/~steve.mullinax/bridlemile/BCS.htm)), and the “Your Watershed Habitat” site (in progress at <http://www.vonsalza.com/akcr/ywh/index.html>).

We will continue updating the “Your Watershed Habitat” site to motivate and inform homeowners on the benefits and methods of lot-scale restoration projects.

We will assist the new Open Space Parks friends group---SW 58<sup>th</sup> ave. and SW Hamilton St. area. At events our we display water shed information sheets, photographs, hand-outs, which convey the scope and purpose of restoration in the parks, emphasizing the goal of a healthy native plant community and benefits of improved habitat and water quality. For Bridlemile School classes we provide watershed information, displays, and field trips to the Hamilton Park restoration site, as well as watershed contacts and educational materials for the school’s teachers and principal.

## Section II: Community Partnerships

Bridlemile Creek Stewards project coordinators roles:

- Steve Mullinax and Greg Schifsky have nine years of practical experience in watershed restoration and have taken courses to complement this experience. They make their knowledge and experience available to interested citizen groups. Bridlemile Creek Stewards received the Green Heron Community Group Award from the Tualatin Riverkeepers in April, 2005. According to the award citation, Greg Schifsky and Steve Mullinax provide the dedicated leadership that enables the Bridlemile Creek Stewards to make a real difference in the headwaters of Fanno Creek.
- Victor von Salza is our webmaster, who partners with Steve Mullinax to develop and improve the BCS “Your Watershed Habitat” web site.
- Network with related watershed organizations, to provide our organization with knowledge and skills.
- Overall planning and management of project, including assignments of volunteers and partners.
- Lead for public outreach, including prior notice to neighbors of BES and volunteer crew activities on-site, volunteer recruitment, solicitation of partner involvement.
- Organize monthly BCS meetings for project coordination and community outreach.
- Procurement of materials, supplies and plants.

<b>Partners: Roles committed</b>	
<b>Partner</b>	<b>Role</b>
BES Revegetation Crew (Darian Santner)	Follow-up with continued invasive removal and vegetation monitoring throughout this growing season. If the survival falls below an acceptable percentage, consider interplanting.
BES	Naturescaping coordinator assistance. Supply tools on loan. Tabling opportunities.
Clackamas County Extension Service	Director provides technical expertise and connection to OSU and state watershed agencies. Students monitoring Hamilton Park macroinvertebrates available for outreach to children and citizens in Albert Kelly Park. Training opportunities.
Bridlemile and Hillsdale Neighborhood Associations	Organize and promote contacts and education of neighbors, park users and interested organizations.
Portland Parks & Rec	Review plans for conformance with park maintenance procedures and best restoration practices. Provide technical advice on plant communities and plant choice for best adaptation; sources for erosion control materials. (Mark Wilson)
St. Andrews Church	BCS and church group assist each other during invasive and planting events.
SWNI	Fiscal agent. Administrative services. Publish notices and information. Liability insurance provider.
Tualatin Riverkeepers	Publicize work parties. Assist volunteer recruitment. Facilitate links to other watershed stakeholders. Provide opportunities for tabling through events sponsored by TRK.
TRWC	Technical assistance (Kyle, Obrich). Contacts with TB stakeholders. Contacts for resource opportunities.
Neighbors near park. Households near the park canvassed 2003-2004.	Invasive removal, outreach, watering, refreshments for events.
Schools and student groups. (Past contributors include Lincoln HS, Wilson HS, Catlin Gable, Robert Gray MS, Bridlemile School, Boy Scouts, Brownies, Congregation Neveh Shalom. .)	Student volunteers for invasive removals and planting.
Local businesses. (Past contributors include Albertson s, Wild Oats, Hot Lips Pizza, New Seasons, Starbucks, Noah s Bagels, Slice of Heaven Pizza.)	Contribute refreshments for events.

**Section III: Timeline (1 page maximum)**

Note: BCS is Bridlemile Creek Stewards; BES is Portland Environmental Services Revegetation Program; TRK is Tualatin Riverkeepers; NA s are Neighborhood Associations.

<b>Time-Frame</b>	<b>Description</b>	<b>Who</b>
July 06 June 07	Tabling community events.	BCS
July, 06 June, 07	Monthly work (except December, 06) parties to remove invasive plants do infill planting of natives.	BCS
Q3, 2006	Watering newly planted natives.	BCS, neighbors
Q3, 06 Q2, 07	Educational outreach through tabling and Your Creek Habitat web site.	BES, TRK, BCS
2007- 2008	Monitor site for new invasive growth, four times per year.	BCS

Section IV: Budget

<b>BUDGET 2006 - 2007 Community Watershed Stewardship Grant</b>					
Activity/Expense	CWSP Funds	CWSP category subtotal		Total	
<b>Materials</b>					
Office Supplies	150			150	
Plant Materials	600			600	
Erosion control	200			200	
Gas/mileage	85			85	
Tools	75			75	
<b>Materials subtotal</b>		<b>1,110</b>		<b>1,110</b>	
<b>Refreshments</b>	100	100		100	
<b>Technical</b>					
Coordination Fees	100				
Contracted services (Americorps)	440				
<b>Technical subtotal</b>		<b>540</b>		<b>540</b>	
<b>Totals</b>	<b>1,750</b>	<b>1,750</b>		<b>1,750</b>	
<b>Additional Expected Revenues (in-kind)</b>					
Volunteer hours:	Hours	Rate/hr.	Total		Contributors
Student volunteers	150	7	1050		Catlin Gabel School, Girl Scouts, Boy Scouts, various school groups
Adult volunteers	255	15	3825		BCS, neighbors, St. Andrews, community groups.
Professional volunteers	375	25	9375		Greg Schifsky, Steve Mullinax, Victor Von Salsa, other BCS volunteers.
<b>Total volunteer value</b>				<b>14250</b>	
<b>Materials</b>					
Plant materials				120	Gregory Gardens (Greg Schifsky)
Erosion controls				100	BCS, volunteers, neighbors (logs, stakes)
Media resources				200	SWNI, TRK, Fans of Fanno Creek, SOLV, Ash Creek Press, Multnomah Village Post, Southwest Connection, The Oregonian
Web-hosting				50	Victor von Salza
Office supplies				150	SWNI, BCS volunteers.
Food & beverages				200	Community Businesses. Past contributors include Starbucks, Noah's Bagels, Natures or WildOats stores, New Seasons market, Albertson's.
<b>Total in-kind</b>				<b>15070</b>	
<b>Total budget</b>				<b>16,820</b>	

## **Exhibit A**

CWSP 2006-2007 Grant Application  
Bridlemile Creek Stewards  
4131 SW Lee St.  
Portland, OR 97221-3667  
21 April 2006

### **Scope of Work July 1, 2006-June 30, 2007** (requested by Portland Parks & Rec)

1. Maintain and Monitor both Hamilton Park and Albert Kelly Park stream/riparian enhancement project areas. This includes invasive removals in restored areas. This work is performed once a month in one of the above-mentioned Parks except for December, 2006.
2. Install simple erosion control devices such as bio-bags or small log/woody debris across slopes in identified areas of highest erosion occurrences.
3. Plant approximately 120 replacement native plants, selected for performance, in eroded or vacant areas that need vegetation.
4. Continue the development of the web site "Your Watershed Habitat" that relates to stream restoration projects.
5. Coordinate and provide direction to an Americorps team in August, 2006 in Hamilton Park to curb invasive plants and install some simple erosion control devices.
6. Table and staff various Bridlemile Creek Stewards tables throughout the Tualatin River Basin and the Fanno Creek Watershed.
7. Provide speakers to Bridlemile School classes to discuss water sheds and where people fit into the water sheds and the importance of maintaining them.
8. Collect a macro invertebrate sample two times during the grant period.

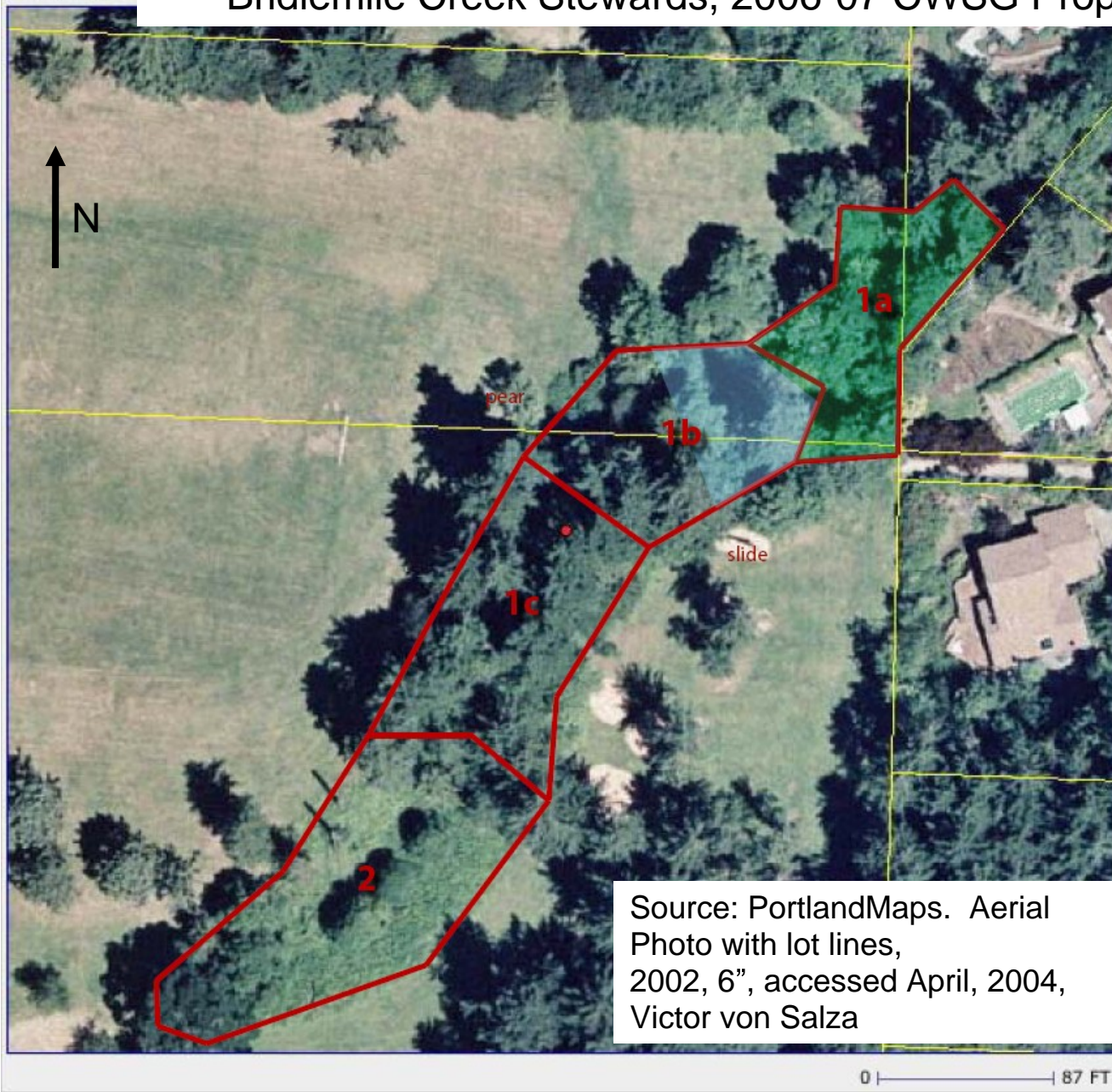
#### **Response from Mark Wilson, PP&R, 4/20/06:**

Lisa/Jennifer, Mary Rose Navarro called this morning and let me know that the Bridlemile Creek Stewards intend to continue their fine work in Hamilton and Albert Kelley Pk. I support them wholeheartedly (and hopefully this email works as a letter of support!)

Mark Griswold Wilson  
*Restoration Ecologist*  
*Portland Parks & Recreation*  
*Natural Resource Program*  
*Eastside Field Office*  
503.823.1693 (Office)  
503.823.6736 (Cell)

# Albert Kelly Park Restoration Site

## Bridlemile Creek Stewards, 2006-07 CWSG Proposal



Estimated Area	
Area	sq.ft.
1a	7177
1b	8909
1c	10103
2	13823
<b>Total</b>	<b>40013</b>

